

B8D



- Stainless steel IP67 shear beam load cell (250kg is bending beam load cells)
- Suitable for floor scales, automobile test facilities, hopper scales and other weighing devices.
- Current calibrated (sc-option)



OIML test certificate no. TC8010 Revision 0 and D09-05.19
C of C no R60/2000-NL1-11.28 and R60/2000-CN1-06.05

Certificate no. 12-022

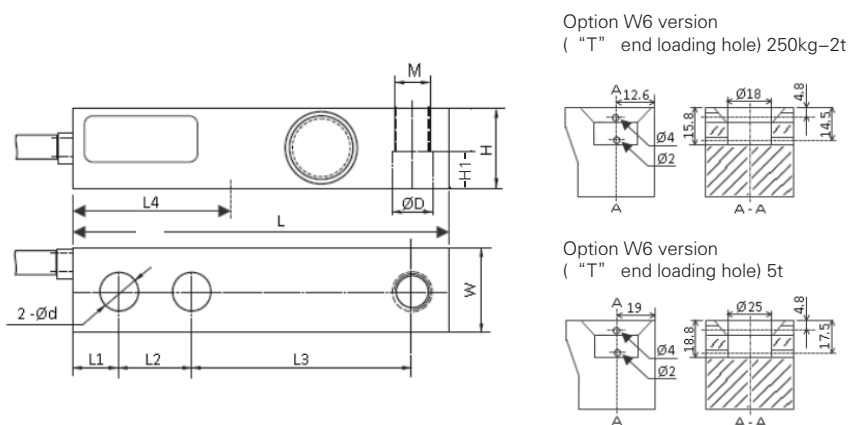
Available models

Capacity	Accuracy	Full article description
250 kg	C3/C4/C5	B8D-C3/C4/C5-250kg-6B(-W6)
0.5 t	C3/C4/C5	B8D-C3/C4/C5-500kg-6B(-W6)
1 t	C3	B8D-C3-1t-6B(-W6)
2 t	C3	B8D-C3-2t-6B(-W6)
5 t	C3	B8D-C3-5t-6B(-W6)

Specification

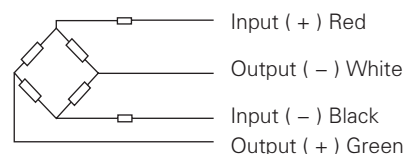
Accuracy class	Output sensitivity (= FS)	OIML R60 C3				OIML R60 C4	OIML R60 C5
		3.0 ± 0.008					
Maximum capacity (E _{max})	t	0.25	0.5, 1, 2	5	0.25, 0.5		
Maximum number of load cell intervals (nLC)		3000			4000	5000	
Ratio of minimum LC verification interval Y = E _{max} / v _{min}		10000	7500	9000	10000	10000	
Combined error	%FS	± 0.0230			± 0.0175	± 0.0140	
Safe overload	of E _{max}	150 %					
Ultimate overload	of E _{max}	300 %					
Zero balance	%FS	± 1.0					
Excitation, recommended voltage	V	5 ~ 12(DC)					
Excitation maximum	V	18(DC)					
Input resistance	Ω	350 ± 3.5					
Output resistance	Ω	350 ± 3.5					
Insulation resistance	MΩ	≥ 5000 (50VDC)					
Compensated temperature	°C	-10 ~ +40					
Operating temperature	°C	-35 ~ +65					
Storage temperature	°C	-40 ~ +70					
Element material		Stainless steel					
Recommended torque on fixation	N.m	M12: 75		M20:450			
Ingress protection (according to EN 60529)		IP67					
ATEX classification (optional)		II1G Ex ia IIC T4		II1D Ex iaD 20 T73°C C		II3G Ex nL IIC T4	

Dimensions in mm



Dimension / Capacity	L	L1	L2	L3	d	H	W	D	H1	M
0.25t	130 (5.12)	15.7 (0.62)	25.4 (1.0)	76.2 (3.0)	13.46 (0.53)	28.4 (1.12)	30.7 (1.20)	13.4 (0.53)	14.22 (0.56)	M12
0.5t - 2t	130 (5.12)	15.7 (0.62)	25.4 (1.0)	76.2 (3.0)	13.46 (0.53)	31.32 (1.23)	31.32 (1.23)	13.4 (0.53)	15.75 (0.62)	M12
5t	171 (6.73)	19 (0.75)	38.1 (1.5)	95.2 (3.75)	20.65 (0.81)	36.8 (1.45)	36.8 (1.45)	20.65 (0.81)	19.05 (0.75)	M20X2.5

Wiring



- Shielded, 4 conductor cable
- Cable diameter: Φ5mm.
- Standard cable length: 6m
- Shield in not connected to the element.